

Hetai 合泰



CHANGZHOU HETAI ELECTRIC MOTORS&APPLIANCE CO., LTD.



World-leading Motor Supplier

Keep Creating Value for Customers

Improving the Life Quality for Staff

Keep Elevating Shareholder's Equity

COMPANY PROFILE

» ChangZhou Hetai (Stock code:834300) is a leading manufacturer with advanced technology and innovative management mode. Hetai specializes in producing servo motors, DC Motors, hybrid stepping motors, drivers and so on.

Hetai dedicates to professional electrical integration and automation strategies for customers. The products are almost applied in robots, packing machinery, textile machinery, medical instruments, printing machinery, intelligent logistics equipment... Hetai also sends its products to USA, Europe, Southeast Asia and all-around China.

Hetai is located in ChangZhou, JiangSu province and its workshop area is over 35,000. Since Hetai reformed in 1998, the specialization, scale of production has ensured to manufacture 3,000,000 motors every year.

» In the year 2003, Hetai was qualified by ISO9001/TS 16949 Certificate, and passed supervision successfully. The company also attained import and export right of external trade of self-management.

» In 2005, Hetai has qualified by EU Type Examination Certificate and get four Invention Patent, seven Utility Patent, and one Appearance Design Patent.

» Hetai was quoted on the stock market in 2015.

Hetai was authenticated by safety standardization management system in next year.

The company was qualified as high-tech enterprise in 2018.

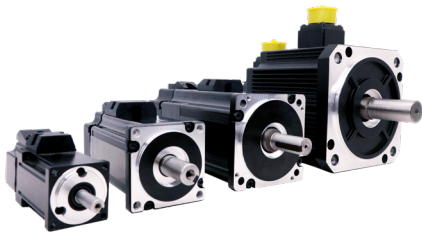


ISO9001



IATF16949

**General
Range**



Servo Motor



DC Brushless Motor



Planetary Gearbox



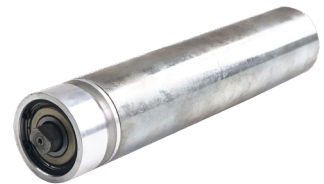
Stepping Motor



Gearbox Motor



Driver



Electric roller Motor

▶ PLANETARY GEARBOX 22 (mm)



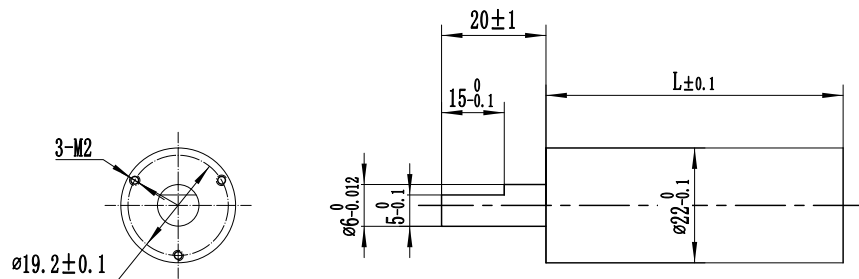
Product Specification

Housing Material	Bearing at output	Radial load (10mm from flange) (N)	Shaft axial load (N)	Shaft press fit force max (Static) (N)	Radial play of shaft (mm)	Thrust play of shaft (mm)	Backlash at no-load
Metal	Porous Bearing	≤35	≤15	≤80	≤0.08	≤0.4	≤1.5°

* Load relates to speed, actual value depends on different situation.

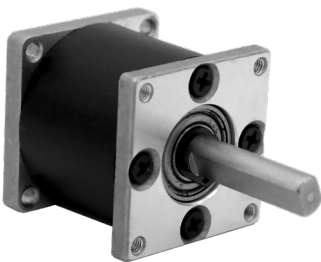
Number of gearbox trains	1	2	3
Reduction Ratio	1/4	1/16 1/19	1/64 1/76 1/88
	1/4.75	1/22 1/26	1/104 1/121 1/144
Length (mm)	13.9	32.4	43.9
Weight (g)	29.0	52.0	73.0

Mechanical Dimension



Unit: mm

▶ PLANETARY GEARBOX 28 (mm)



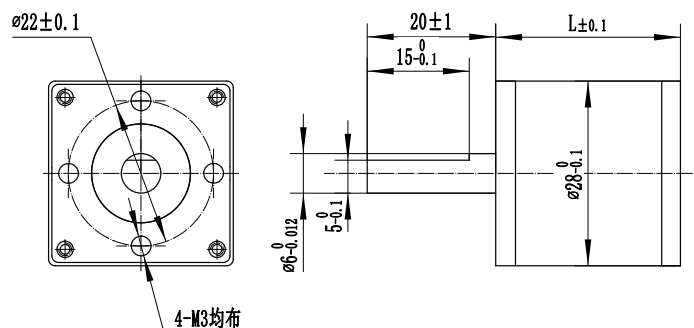
Product Specification

Housing Material	Bearing at output	Radial load (10mm from flange) (N)	Shaft axial load (N)	Shaft press fit force max (Static) (N)	Radial play of shaft (mm)	Thrust play of shaft (mm)	Backlash at no-load
Metal	Ball Bearing	≤80	≤30	≤200	≤0.03	≤0.1	≤1.5°

* Load relates to speed, actual value depends on different situation.

Reduction Ratio	Number of gearbox trains	Length (mm)	Weight (g)
1/6	1	28.5	105.0

Mechanical Dimension



Unit: mm

PLANETARY GEARBOX 36 (mm)



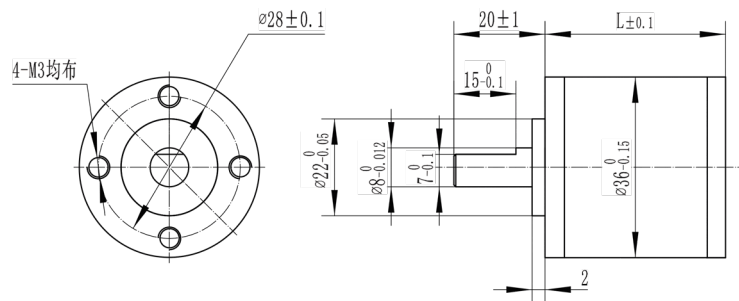
Product Specification

Housing Material	Bearing at output	Radial load (10mm from flange) (N)	Shaft axial load (N)	Shaft press fit force max (Static) (N)	Radial play of shaft (mm)	Thrust play of shaft (mm)	Backlash at no-load
Metal	Ball Bearing	≤120	≤80	≤500	≤0.03	≤0.1	≤1.5°

* Load relates to speed, actual value depends on different situation.

Number of gearbox trains	1	2		3		
Reduction Ratio	1/5	1/14 1/20	1/16 1/25	1/53 1/94	1/62 1/117	1/76
Length (mm)	24.8	32.4		41.9		
Weight (g)	145.0	173.0		213.0		

Mechanical Dimension



Unit: mm

PLANETARY GEARBOX 42 (mm)



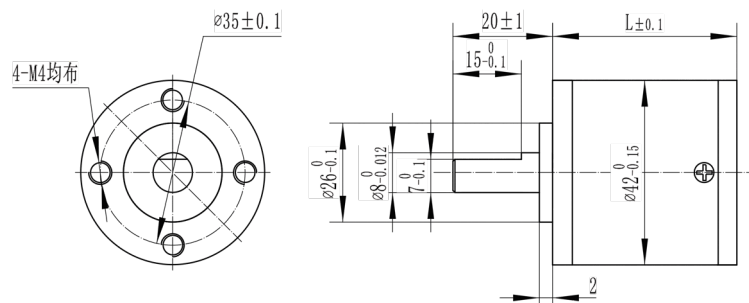
Product Specification

Housing Material	Bearing at output	Radial load (10mm from flange) (N)	Shaft axial load (N)	Shaft press fit force max (Static) (N)	Radial play of shaft (mm)	Thrust play of shaft (mm)	Backlash at no-load
Metal	Ball Bearing	≤120	≤80	≤500	≤0.03	≤0.1	≤1.5°

* Load relates to speed, actual value depends on different situation.

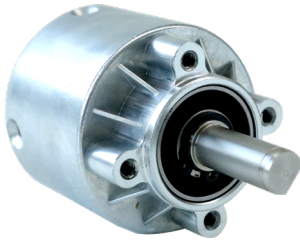
Number of gearbox trains	1	2		3					
Reduction Ratio	1/4 1/6	1/15 1/25	1/18 1/36	1/21	1/54 1/90	1/65 1/112	1/73 1/126	1/81 1/155	1/216
Length (mm)	32.5	46.3		60.1					
Weight (g)	170.0	207.0		267.0					

Mechanical Dimension



Unit: mm

PLANETARY GEARBOX 52 (mm)



Product Specification

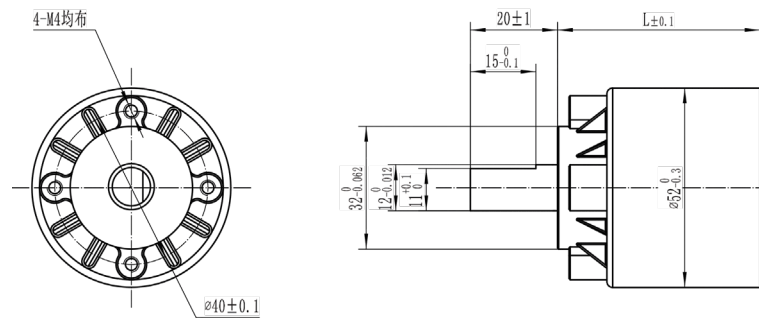
Housing Material	Bearing at output	Radial load (10mm from flange) (N)	Shaft axial load (N)	Shaft press fit force max (Static) (N)	Radial play of shaft (mm)	Thrust play of shaft (mm)	Backlash at no-load
Metal	Ball Bearing	≤450	≤200	≤1000	≤0.03	≤0.1	≤1.5°

* Load relates to speed, actual value depends on different situation.

Reduction Ratio	Number of gearbox trains	Length (mm)	Weight (g)
1/13	1	52.9	345.0

* The shape also has 56mm diameter gearbox, please see detail in gearbox brochure.

Mechanical Dimension



Unit: mm

PLANETARY GEARBOX 56 (mm)

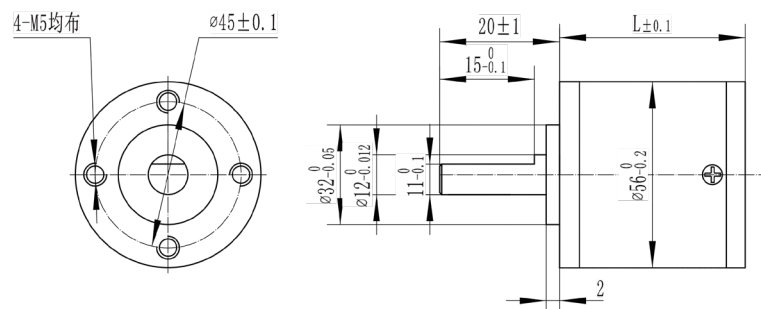


Product Specification

Housing Material	Bearing at output	Radial load (10mm from flange) (N)	Shaft axial load (N)	Shaft press fit force max (Static) (N)	Radial play of shaft (mm)	Thrust play of shaft (mm)	Backlash at no-load
Metal	Ball Bearing	≤450	≤200	≤1000	≤0.03	≤0.1	≤1.5°

Number of gearbox trains	1		2			
	Reduction Ratio	1/6	1/15	1/18	1/26	1/47
Length (mm)	41.3	59.6				
Weight (g)	491.0	700.0				

Mechanical Dimension



Unit: mm

*To find out more details please read HeTai Planetary Gearbox Brochure.